



Systemvin

SYSTEVIN METAL FINISHERS

.....Fine finishing for the bright beginning

Private and Confidential



Systemvin Metal Finishers
No 93/A-6, KIADB Jigani Industrial
Area, 2 Phase, Anekal Taluk, Jigani,
Bengaluru - 560105 (Near Otis Circle)
Contact Mobile No :+91 9886510744
Land Line : 080 29910744




Systemvin Metal Finishers

Proprietor



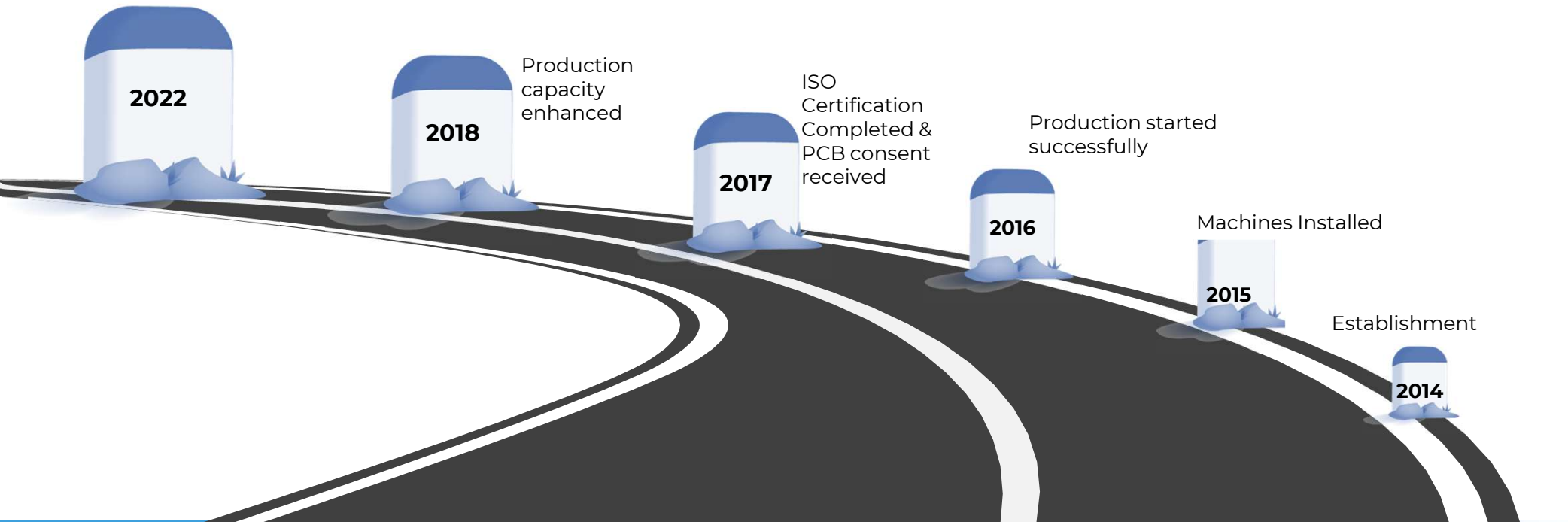
Sri Ravindra Desai

SYSTEVIN METAL FINISHERS,
Bengaluru

-  Holds an Engineering Degree in **Mechanical**
-  Having extensive work experience of more than **15 years** in the filed of Production, Quality, Design, Marketing, R&D and Vendor Development in Electroplating Industries and OEM's
-  Has been contributing to the field of Electroplating industry by establishing a plant at Bengaluru in **2014**

Milestone

- Re-Investment to upgrade the automatic line based on prospective leads from the customer
- Addition of Staffs/Engineers
- Enhancement of Quality instruments and inspection method
- Enhancement of Reliability by installing SST Chamber(Salt Spray Test Chamber)
- Initiation towards visual factory
- Spreading Quality culture
- Awareness on Safety

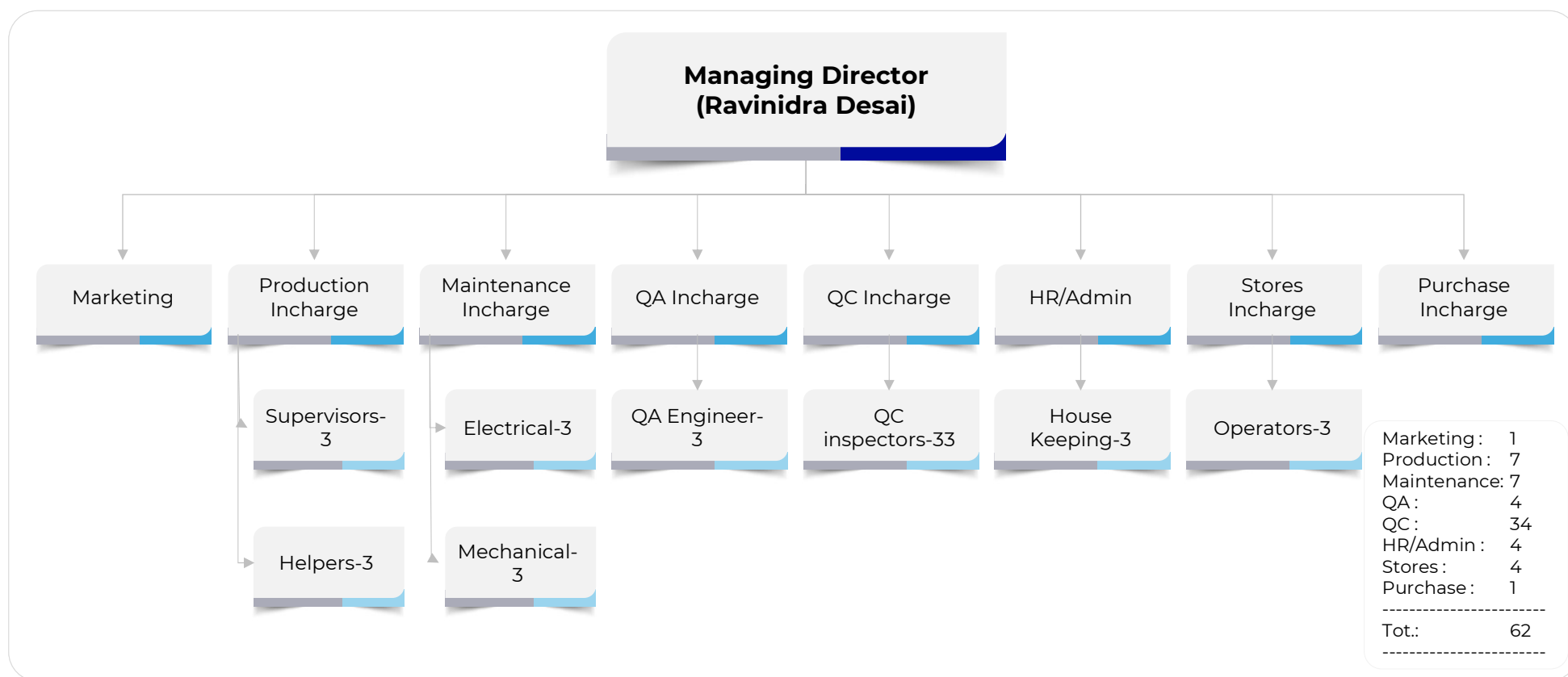




Quality Policy

Systemin metal finishers is committed to offer surface treatment services at competitive rates to meet customer specific requirements with quality, quantity and on time delivery by involving all the employees and continually improving the total quality management system on a regular basis.

Organization



FACILITIES



- 1 Sophisticated Infrastructure.
- 2 PLC & SCADA Room.
- 3 Process PP Tanks
- 4 Oil Cooled Rectifiers
- 5 Automatic Wagon Transporters.
- 6 Air Agitations system
- 7 Oil Skimmer.
- 8 Filters.
- 9 Top Coat Sealant
- 10 Automated Hot Air Drier
- 11 Q. A Laboratory
 - a Salt Spray Chamber.
 - b Plating Thickness Gauge.
 - c Hulcell System.
 - d pH Meter.
 - e Chemical Analysis System.
- 12 200KVA Generator

FACILITIES



- 13 14 HP Exhaust System.
- 14 Effluent outsourcing
- 15 10TR Chiller Unit.
- 16 Operation clearance obtained from Karnataka State Pollution Control Board.
- 17 Hydrogen de-embrittlement Oven.
- 18 HT Power 250KVA.
- 19 Thermic Fluid Heater.
- 20 Zinc Generation Tank.
- 21 Spare Rectifiers, Machines, Pumps, and Motors.
- 22 O.Q.C(Out Going Quality Control)
- 23 Chemical Storage Area.
- 24 Dispatch Area.
- 25 I.C.C.S.A.(Incoming Components Storage Area)
- 26 O.C.C.S.A.(Outgoing Components Storage Area)
- 27 Office
- 28 Cafeteria
- 29 Compressor.
- 30 Trained Manpower
- 31 Epoxy Coated Flooring.



Infrastructure

**The Factory
dimension are:
15600Sq.ft.**

**Built up area:
11000Sq.ft.**

**The shed is well
ventilated for
electroplating Plant
with epoxy flooring.**

Material Entry Gate

Reception area

Conference Room

**Office Area – 1100
Sq.ft.**

Cafeteria



Q. A Laboratory

Q. A Laboratory:

Salt Spray Chamber.

Plating Thickness Gauge.

Hulcell System.

pH Meter & pH paper

Chemical Analysis System.

TDS Meter

Hydrometer

Thermometer

Office Blocks



Advantages of The Alkaline Zinc Electroplating Line Installed at M/s Systevin Metal Finishers

Located in an industrial area close to three major industrial area namely Adugodi – Bangalore, Bommasandra, Electronic city and Veerasandra, Attibele and Hosur – with 25 kilometres

40 to 45 Kms from Peenya, Bidadi and Harohalli Industrial area

All statutory clearances are obtained namely: Inspector of factories and Boilers, Karnataka State pollution control board CFO, Agreement with CETP, GST registration, Onsite emergency plan from Inspector of factories.

As an energy efficient system in place you will get the most optimum costing

Demineralised water is used for production for all plating and post plating processes

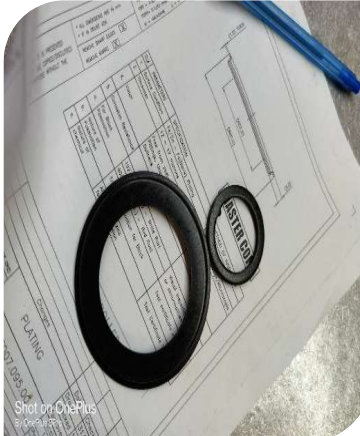
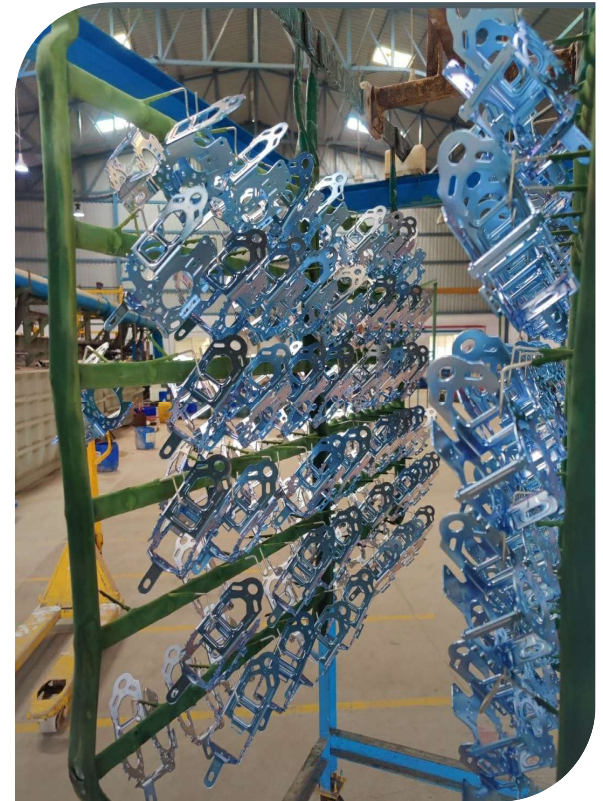
Due to cascade rinses quality of product is much superior to conventional auto plating lines

With all testing facilities in-house assured of quality product will be delivered

Timely delivery because of the capacity of the plant approximately 5,10,000 square feet per month.

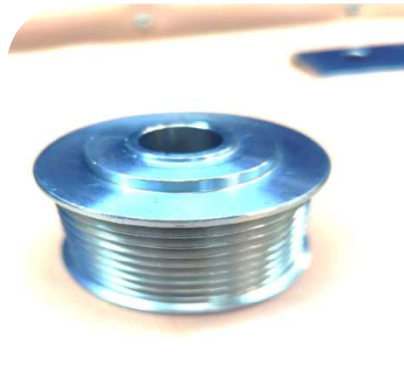
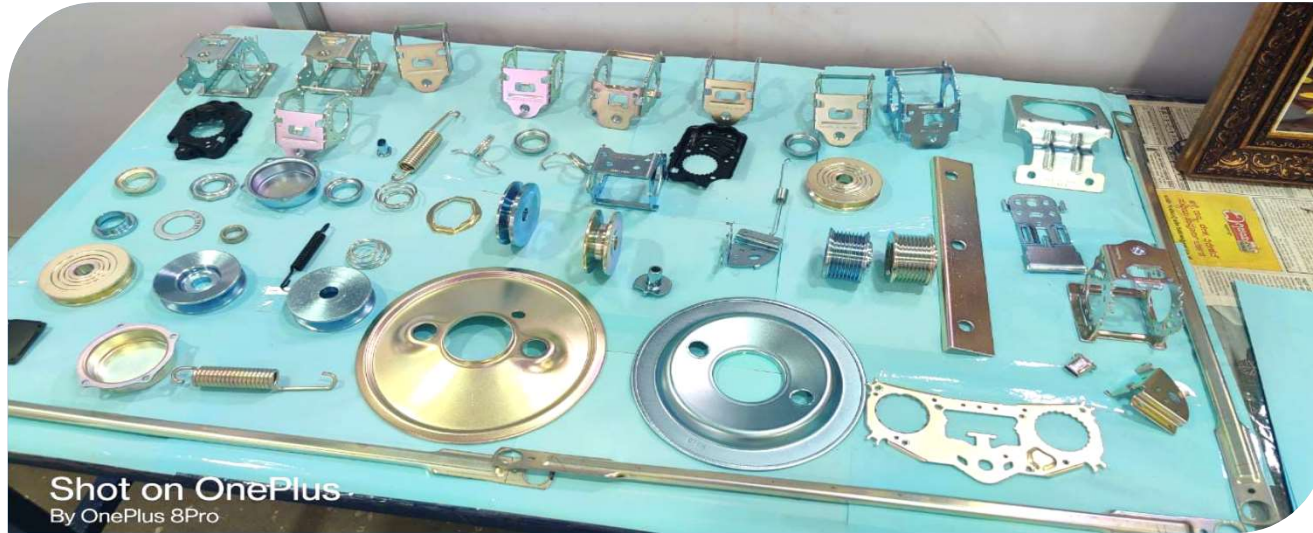
Finished Components

Trivalent yellow ,Blue & Black Passivation



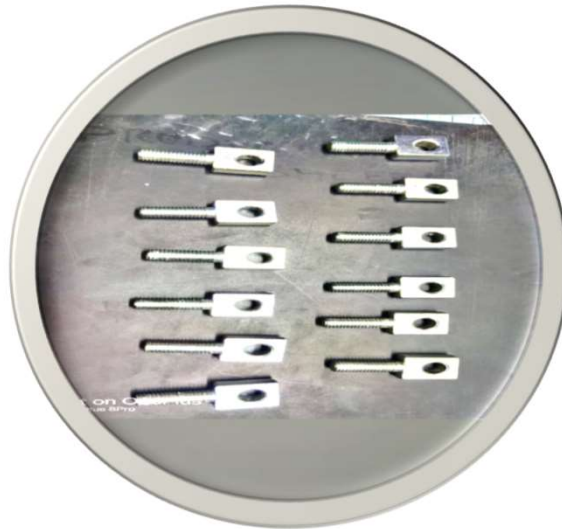
Finished Components

Trivalent yellow ,Blue & Black Passivation



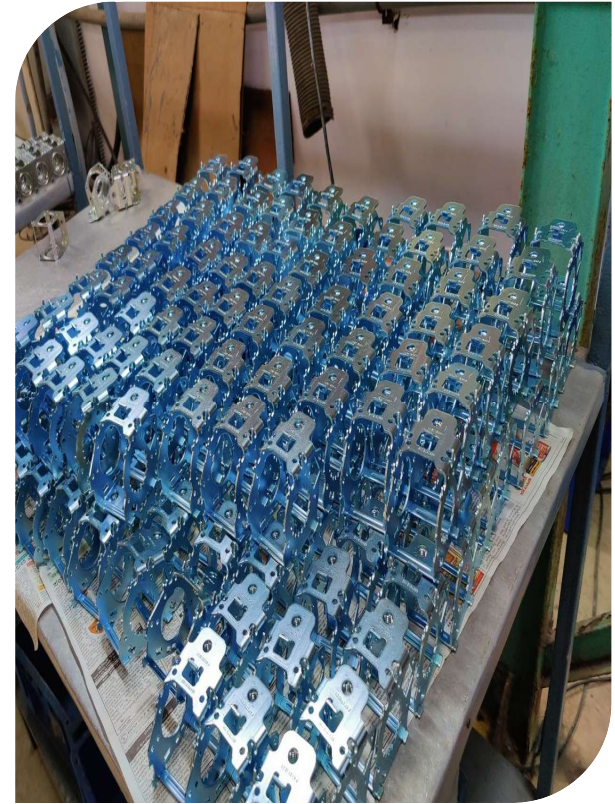
Finished Components

Trivalent yellow ,Blue & Black Passivation



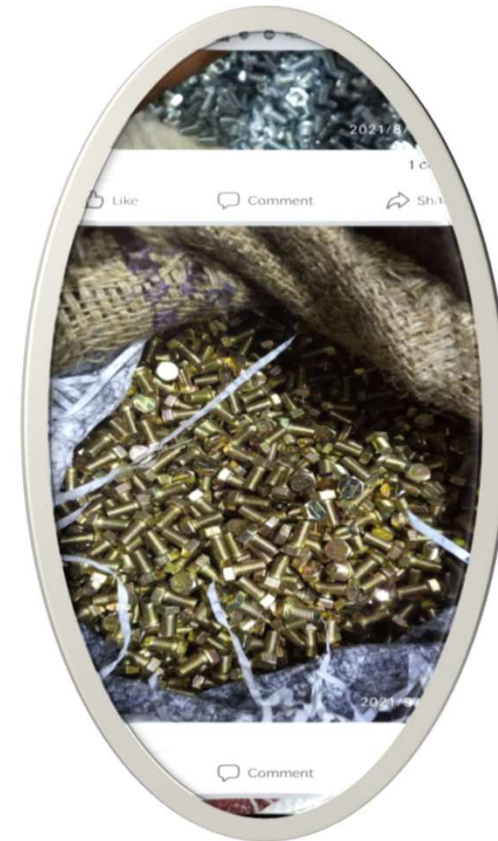
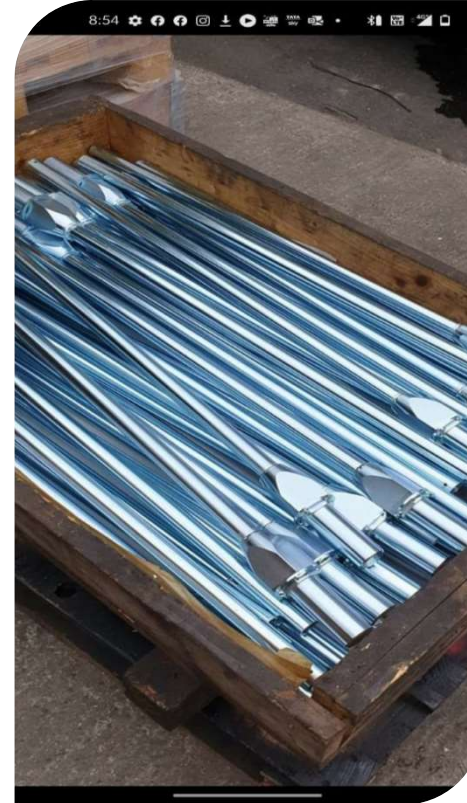
Finished Components

Trivalent yellow & Blue Passivations



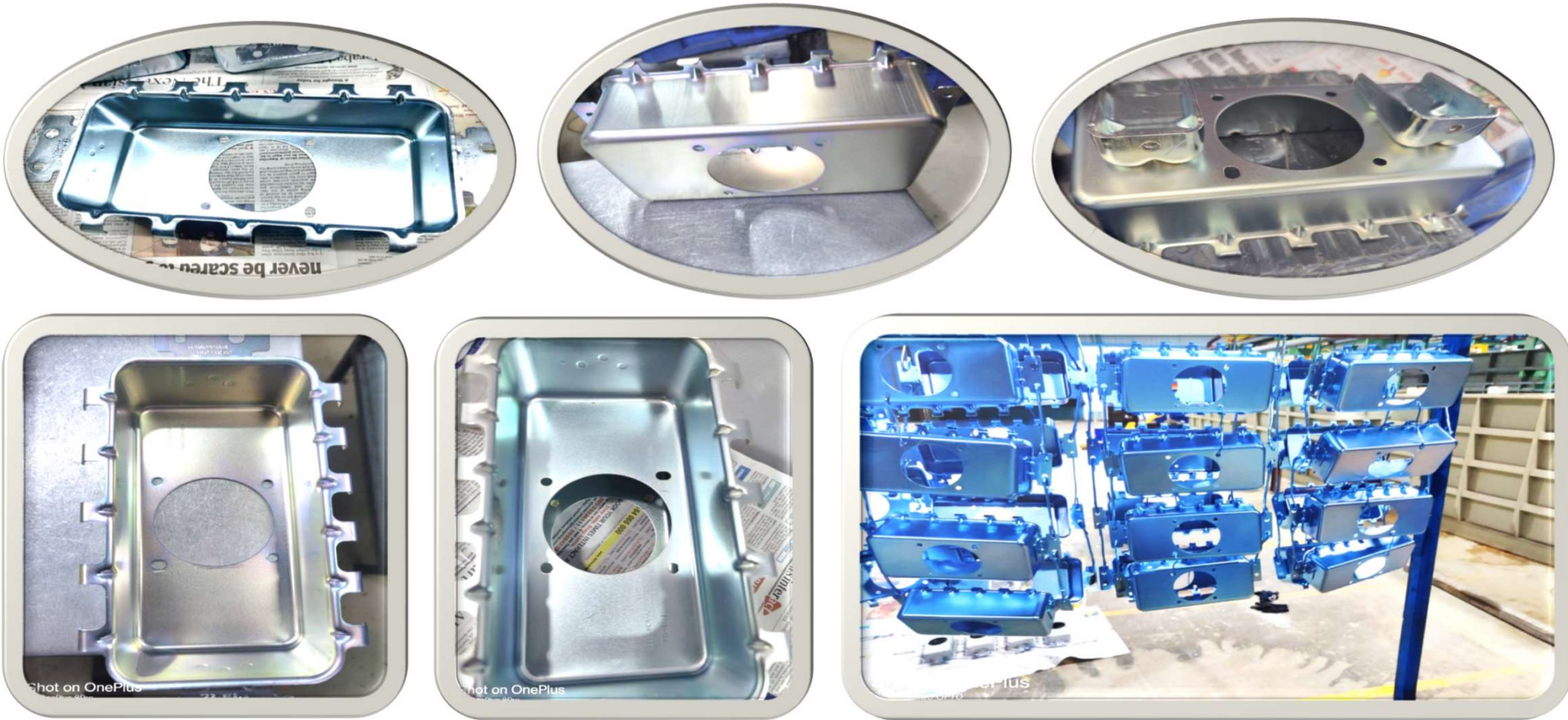
Finished Components

Trivalent yellow ,Blue & Black Passivation



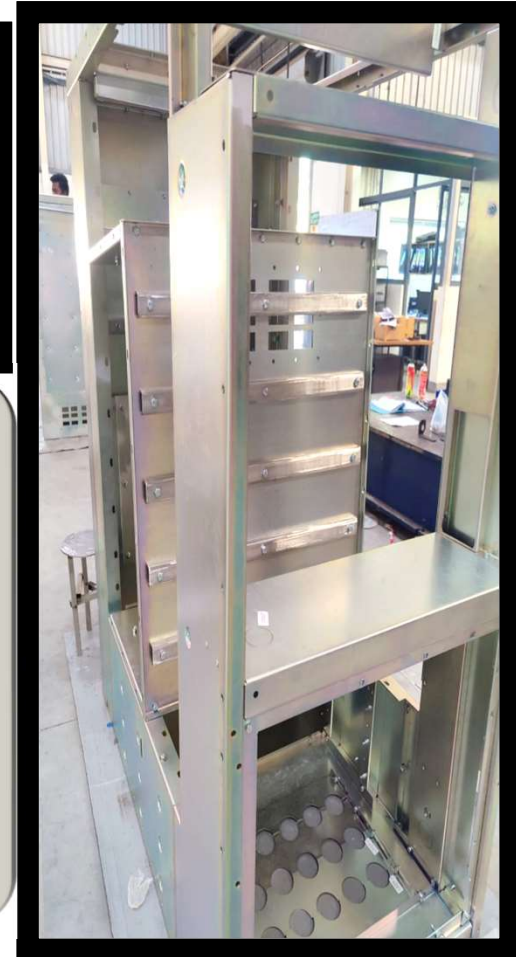
Finished Components

Trivalent yellow & Blue Passivations

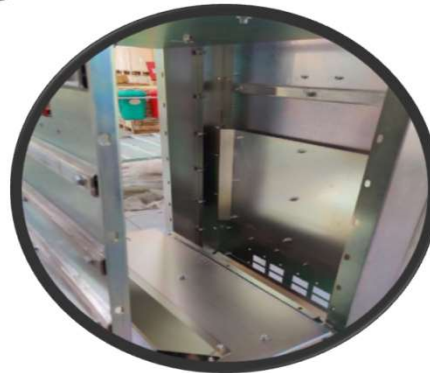


Finished Components

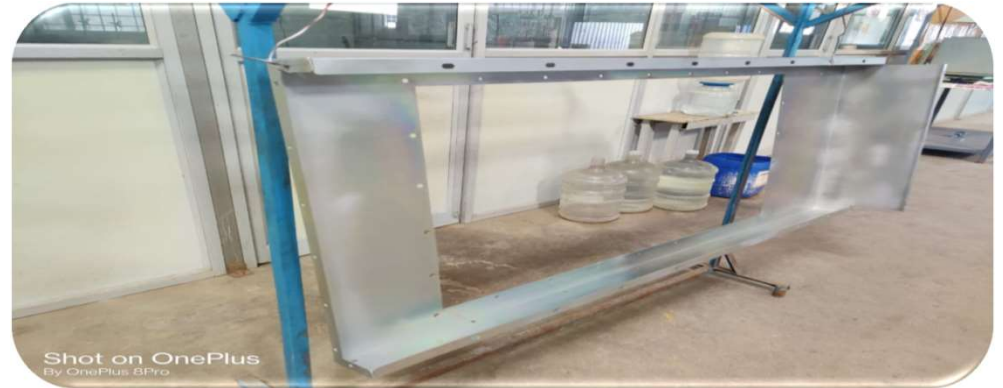
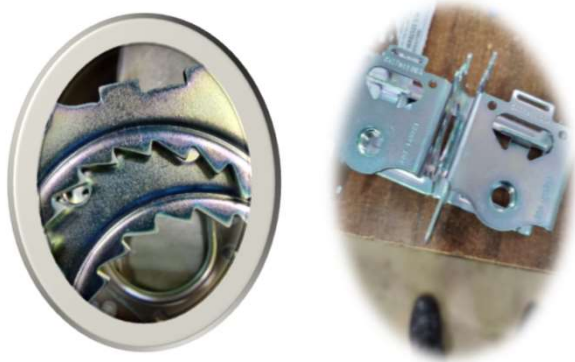
Trivalent yellow & Blue Passivations



Finished Components



Finished Components





.....Fine finishing for the bright beginning

Thank you!